

ORDERING CORES WITH WET or DRY BOXES

When ordering a core which has a Power Take-Off or Starting Handle hole through it we need very precise dimensions to ensure it is in the correct place.

We usually fit a standard "Wet Box" (size permitting) which minimises loss of cooling by allowing coolant to flow around the box. The overall box shape is square whilst the hole itself is circular. Our standard hole has a diameter of 152mm.

After verification of the core details (height, width etc) we need only three sizes to ensure the box is in the correct position.

Dimension A Measure from below top tube plate to centre of the clear daylight.

Dimension B Measure from side of core to centre of clear daylight.

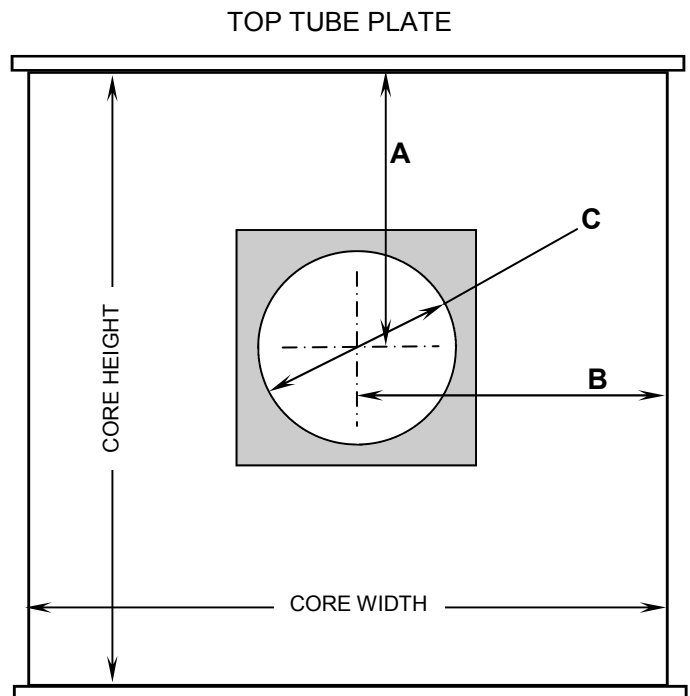
(Bear in mind that when measuring from the side of the core to the centre of the clear daylight of the wet box, measure from the cores widest point. This would include any channel type sides attached to the core but do not measure over the sides which bolt or solder to the tanks of the radiator)

Dimension C The actual clear daylight diameter of the wet box.

(Note - we will need to know if either of the tube plates has an overhang in order to ensure the wet box is aligned with the correct plate.

SPECIAL CORE DETAILS OR LISTED CORE TO BE USED		LISTED CORE:.....
HEIGHT	PATTERN (Flat fin K,L,R,S or Z)	
WIDTH	FIN TYPE (Standard louvre or plain/dimpled)	
DEPTH	FINS PER INCH	
NUMBER OF ROWS	CORE FINISH (Plain or tinned)	

HEADER PLATE DETAILS	
TYPE: SOLDERED – Turned-up	SOLDERED – Flat
DRILLED <i>(Delete as necessary)</i>	
	TOP BOTTOM
HEADER WIDTH	
HEADER LENGTH	
If open ends, please state	
CORNERS	
POSITION	
State overhang to front or central.	
WET BOX POSITION	
Dimension A	
Dimension B	
Dimension C	



CUSTOMER NAME:	CONTACT:
FAX NUMBER:	PRICE QUOTED:

FAX ENQUIRY TO: 0141 550 5850